

RSV-HD

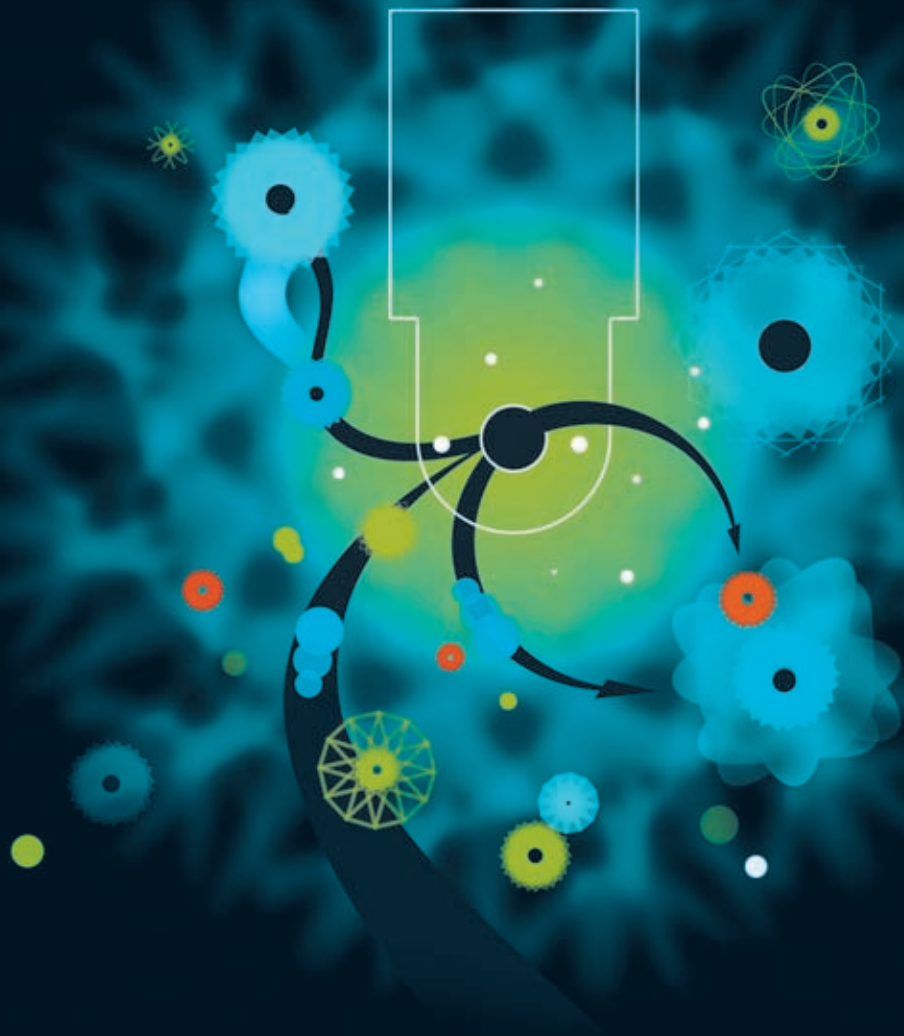
ONE TOUCH OF GENIUS

Email / contactus@visiodent.com

www.visiodent.com

VISIODENT





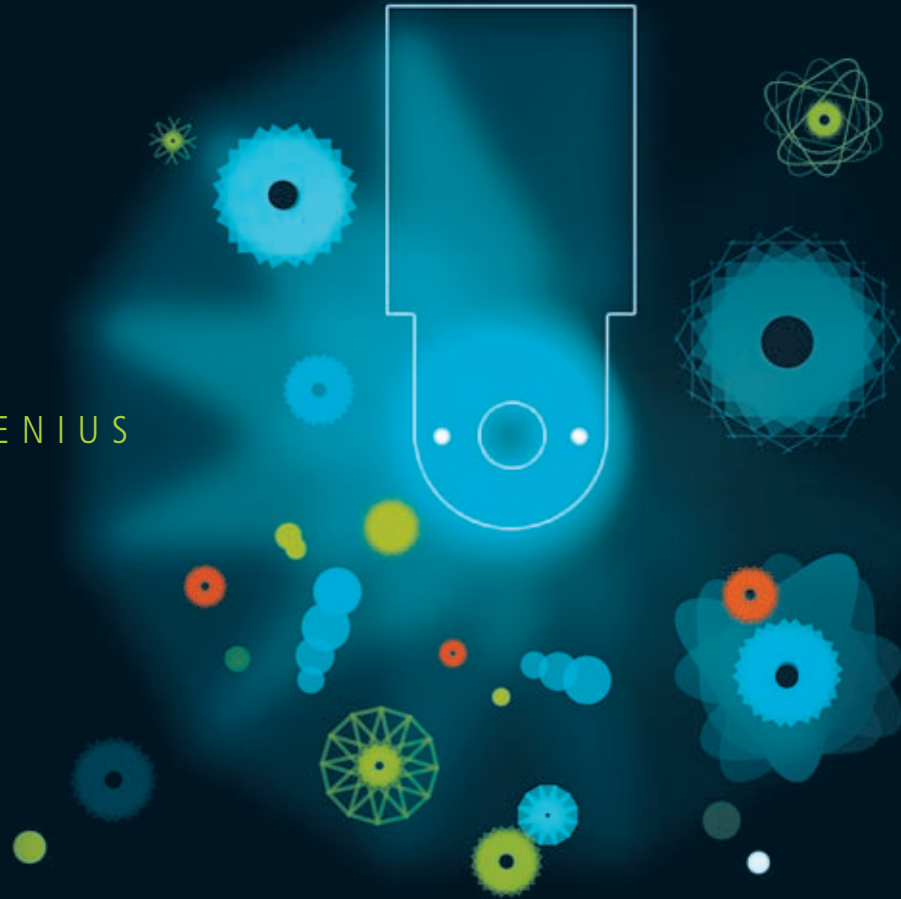
VISIODENT INVENTS RSV+HD

ONE TOUCH WIRELESS TECHNOLOGY
RADIOLOGY NEW GENERATION

Look, touch Never before has digital radiology been so well designed. Visiodent has invented the first very high definition wireless system with backlit screen. The fantastic image quality offers the best definition available on the market today. The HD+ resolution heightens your visual experience and optimizes your diagnosis. With the One Touch system, you can rotate the image or direct the acquisition of images directly in the Imaging software. Enter into a new dimension: Visiodent invents the radiology of the new generation.



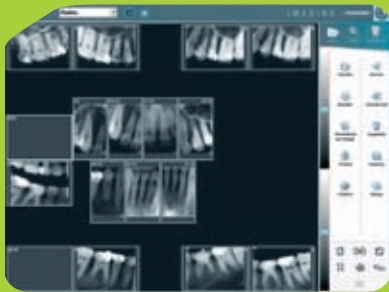
ONE TOUCH OF GENIUS





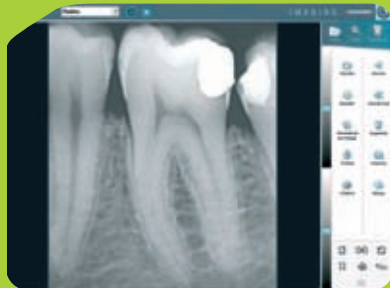


VISUALISE, ENHANCE,
EDIT, ARCHIVE
IN ALL SIMPLICITY...



A clear and ergonomic interface

the new interface of the Imaging software has been redesigned for a more intuitive utilization: a status and acquisition bar, and new icons have been created. The tool box, Management, Tools, and Treatment, enable you to control every last detail, everything is at your fingertips!



ZOOM

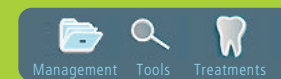


FLASHLITE



EXTRACTION
LEVEL

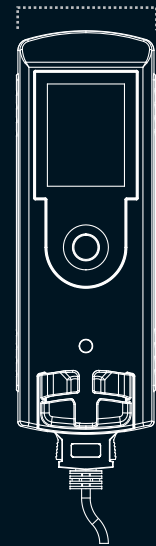
Everything is simple to understand at a glance: each function is identified with an icon, enabling you to adjust the display modes, apply filters, and edit your pictures.



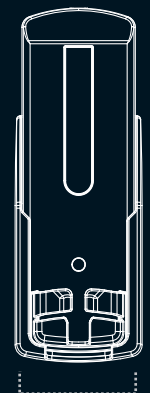
	RSV ^{HD} VIEWWIRELESS	RSV ^{HD} WIRELESS	RSV ^{HD} USB
DIMENSIONS	178 mm x 60 mm x 33 mm	178 mm x 60 mm x 33 mm	156 mm x 50 mm x 22 mm
BACKLIT TFT SCREEN	●		
ONE TOUCH SYSTEM	●		
VERY HIGH DEFINITION MAX RESOLUTION	1700x1368 PIXELS	1700x1368 PIXELS	1700x1368 PIXELS
WIRELESS BLUETOOTH TECHNOLOGY	●	●	
BLUETOOTH USB KEY FOR PC	●	●	
USB PORT 2.0 / 1.1 + USB CABLE 5m + WINDER			●
SUPPORT	●	●	●
FIXATION STRAP	●	●	
IMAGING SOFTWARE	●	●	●
CHARGER 3.5 MM PLUG RECHARGING TIME : 1H	●	●	
4 BATTERIES FORMAT AAA DE 1,2V CHACUNE, CAPACITÉ 1600 mA/H	●	●	



RSV-HD wireless
60 mm



178 mm



156 mm

50 mm
RSV-HD usb

For all models: CE conformity / medical and electromagnetic security IEC 601-1

SENSORS S1/S2

REAL RESOLUTION	> 20 pl/mm
THEORETICAL RESOLUTION	26,3 pl/mm
GREY SCALE	4096
PIXEL SIZE	19 μm ²
TECHNOLOGY	CCD + fiberoptic + CSI scintillator
NORMS	CE conformity / medical and electromagnetic security IEC 601-1

SPÉCIFICATIONS

	SIZE 1	SIZE2
USE	periapical / others	retroalveolar / bitewing
ACTIVE SURFACE AREA	30 mm x 20 mm (600 mm ²)	24 mm x 24 mm (800 mm ²)
DIMENSIONS	26.3 mm x 38.7 mm x 5.7 mm	30.6 mm x 42.6 mm x 5.7 mm

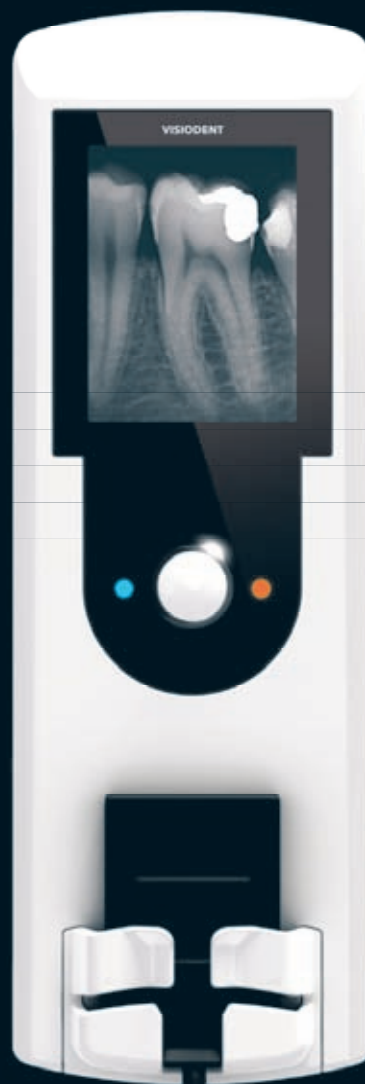
The high sensitivity of these sensors makes it possible to reduce the dose of radiation. Supplied with a complete set of Visident sensor holders.



WHICH RSV+HD
SYSTEM IS BEST
SUITED TO
YOUR NEEDS?

Small, compact, every last detail of the design has been meticulously thought out. Available in 3 models, the ergonomics and quality of finish of the RSV+HD will not leave you indifferent.

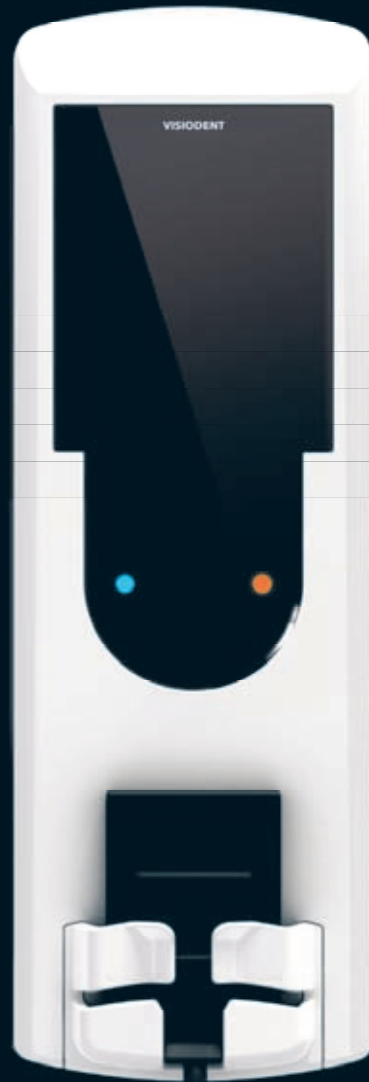
Do you need an high-tech system with a screen display?
The RSV+HD Viewwireless system uses one-touch technology for fingertip control of every function.



WIRELESS
COMMUNICATION
HD+ RESOLUTION
INTEGRATED 2" SCREEN
ONE TOUCH SYSTEM

RSV+HD
VIEWWIRELESS

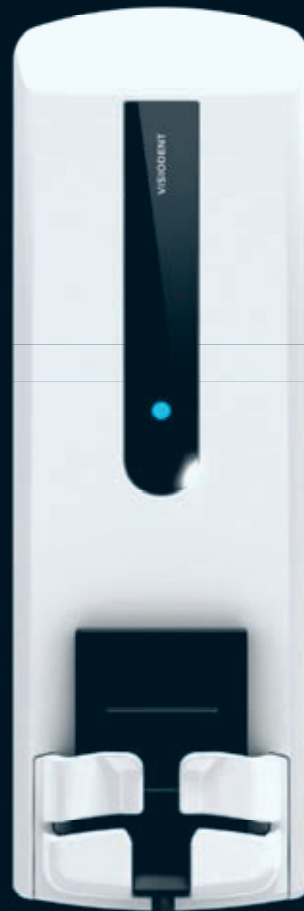
Benefit from the freedom of wireless digital radiology with the RSV-HD wireless model.



WIRELESS
COMMUNICATION
HD+ RESOLUTION

RSV+HD
WIRELESS

Even smaller than the other models, the RSV-HD packs the essential components of HD+ (very high definition) image quality into an elegant, miniaturized box: pocket-format radiology.



COMPACT FORMAT
HD+ RESOLUTION
USB 2.0

RSV+HD
USB

FIXATION

You can use the wall-mount support or attach it to your equipment using the strap supplied with the RSV-HD. It can also be installed on any flat surface.

By fixing it to the chair or the arm of the x-ray unit, your system is always ready to use. This gives you greater comfort with your patient.

