

# albédino



**albédino is a medical light fitting for dental surgeries up to 15 m<sup>2</sup>, suitable for all ceiling heights, from normal to 3m.**

Perfect for lighting average-sized spaces in accordance with standards, it provides ideal lighting for all areas (patient's face, treatment section, transit section).

- **standards (EN 12464-1, ISO 9680):** requirements relating to visual comfort and performance;
- **medical CE mark:** certificate of conformity to European regulations concerning medical devices.

albédino is available in 2 versions:

- ◆ on/off
- ◆ switching on and adjusting the light beam by remote control (powerclick)

**Very modern and highly technical, albédino offers an excellent lighting/comfort ratio.**

www.degrek.com



11, rue de la Cerisaie - F-75004 PARIS  
tél +33 (0) 1 71 18 18 60 - [inform@degrek.com](mailto:inform@degrek.com)

**degré K**  
THE MASTERS OF LIGHT

# albédino

intended for average surgeries (12 to 15 m<sup>2</sup>)

EN 12464-1 • ISO 9680 •  
CE MEDICAL

## Technical characteristics :

4 tubes T5 :	54W, colour 965
Luminous flux :	13800 lumen
Colour temperature :	6500° K .
Colour rendering :	> 90
power supply :	2 electronic ballasts
consommation :	236 W
Dimensions in (mm) :	L 1227 X 620X H97
weight :	11,2 kg
IP20	Suspension : 4 cables
Installation :	** 210 cm min. from floor and 10 cm to 60 cm from ceiling **



**albédino 1** is a highly technical light fitting suitable for all small and medium dental surgeries up to 15m<sup>2</sup>.

It provides ideal lighting in accordance with standards for all areas: patient's face, treatment section, transit section.

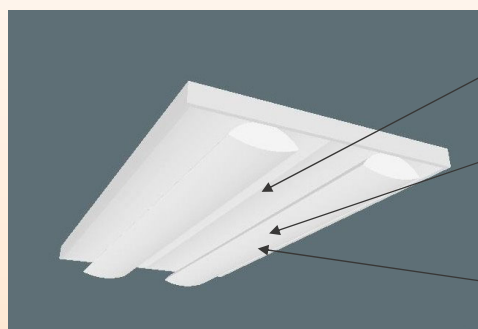
Diffuse lighting has a particularly tonic effect and the luminance range permitted by standards has been used to increase the visual comfort of the operating team.

There is optimum dust protection and cleaning is extremely quick and simple.

**albédino 1.0 : on/off version**

**albédino 1.P : version powerclrc**

## Luminance distribution



600 cd/m<sup>2</sup>:  
luminance measured  
between 2  
diffusers

9900 cd/m<sup>2</sup>: luma-  
nance measured  
on the diffuser in  
the middle of a T5  
tube

4000 cd/m<sup>2</sup>: luma-  
nance measured  
on the diffuser  
beside a T5 tube

Available in 2 versions, albédino 1 offers a lighting quality which is unique on the market, mainly because it:

- ⇒ conforms to the strict requirements of ISO 9680, EN 12464-1 standards;
- ⇒ is medical CE certified: certificate of conformity to European regulations on medical devices;
- ⇒ is fitted with electronic ballasts (instantaneous switching on, suppression of spark phenomena, extended tube life, optimum power consumption, and so avoidance of spurious increase in ambient temperature).



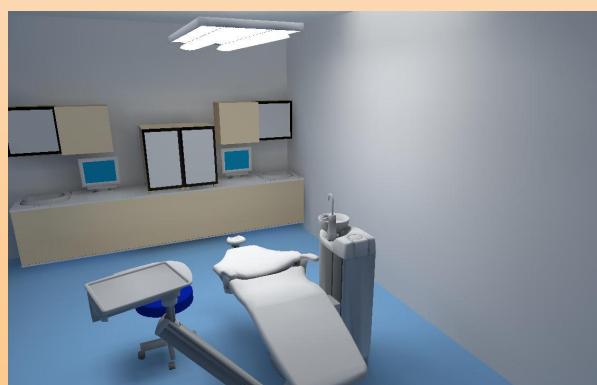
the **powerclrc** system provides the on/off functions and diffused light dimming, using radio waves and no wire or battery, up to 30 m.

In the powerclrc system, the light incorporates a programmable radio-controlled receiver, operated by a switch/remote control – ultra-flat, wireless and battery less – which can be placed where the user wants and needs no wired link to the light or to the mains.

Operators can thus adjust the light beam just as they want to the room's parameters.

The same switch/remote control can operate up to 4 different lights, and each light can be controlled by a virtually unlimited number of different remote controls. Everything is very easy to programme both at installation and at a later time.

Each light is supplied with a switch/powerclrc remote control.



3D simulation by CAD



**albédino 1** is designed to fully meet the imperative standards of comfort, visual performance and safety of treatment:

- optimum light quantity and distribution;
- distribution of luminance;
- limited glare and stroboscopic effects;
- respect for temperature and colour rendering index;
- surfaces can be cleaned and disinfected to ensure strict hygiene.

