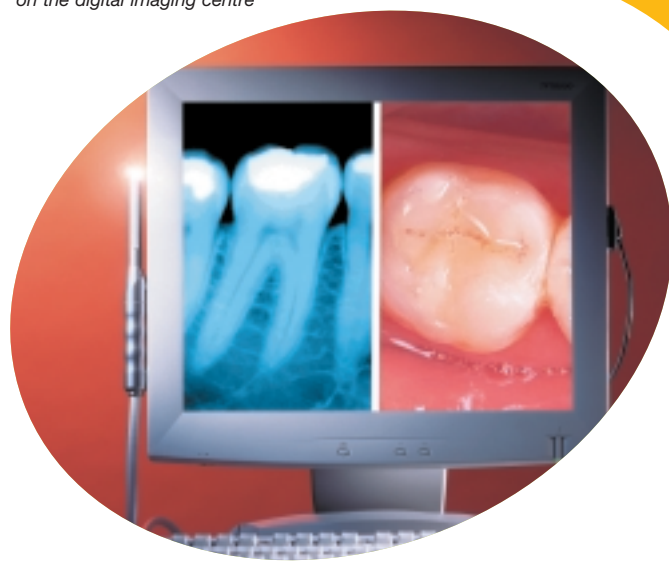


# Dsx730<sup>USB</sup> Sensor

# Dsx730<sup>USB</sup> Sensor

## The best in instant diagnostic imaging

Radio-diagnostic, endobuccal image on the digital imaging centre



- Time saved
- No film
- Reduced x-ray dose
- Improved possibilities of diagnosis
- Full computerisation
- Added value to practice
- Savings

Enter the spectacular world of digital imaging and discover the amazing technical possibilities of the DSX 730 USB sensor. Used in conjunction with QuickVision imaging software, the DSX 730 USB gives you a previously inexperienced sense of control, entirely dedicated to diagnostic imaging. With the time thus made available you can increase your productivity, enhance your communication skills and speed up the multimedia development of your practice toward a masterful 3<sup>rd</sup> millennium.

Approved Distributor's stamp

### Minimum system

Windows 98 SE, Me, 2000\*, NT\*, XP\*  
 Pentium III (or IV) 600 Mhz  
 INTEL Chipset & processor  
 Direct X version 5 minimum  
 64 MB RAM minimum  
 (128 MB recommended)  
 10 GB hard disk  
 CD Rom drive: 24 x minimum  
 Diskette drive: high density (1.44 MB)  
 SVGA card 1024 x 768  
 with 4 MB video Ram, 32 bit true colour  
 800 x 600 minimum and sound card  
 SVGA 17 inch monitor or flat screen  
 Back-up system:  
 Zip, Jaz, tape streamer  
 Minimum 2 USB ports  
 Laser or ink-jet printer  
 \* To be released in 2002.

### Owandy s.a.

74, boulevard du Mandinet  
 F - 77185 Lognes  
 Tel: +33 (0) 1 64 11 18 11  
 Fax: +33 (0) 1 64 11 18 10  
 E-mail: export@owandy.com  
 www.owandy.com

### USB Sensor

Technology	CCD specific
Pixels	21 µ
CCD matrix	1 620 lines x 1 020 pixels 1 652 400 pixels
Theoretical resolution	23,8 pl / mm
Active surface	730 mm <sup>2</sup>
External dimensions	25 w x 40 L x 4.5 h mm
Signal / noise ratio	47 @ 20 mRem
CCD life	Tested / 125 000 exposures
Grey scale	12 bits at capture 4 096 levels of grey
Cable connection	Length 3 m
Connector	CE medical
Conformity to EC Directive	93 / 42 CEE / EC
Impermeability	IPX7 standard
Bus	USB
Standard	CE / USFDA
Compatibility	All generators*

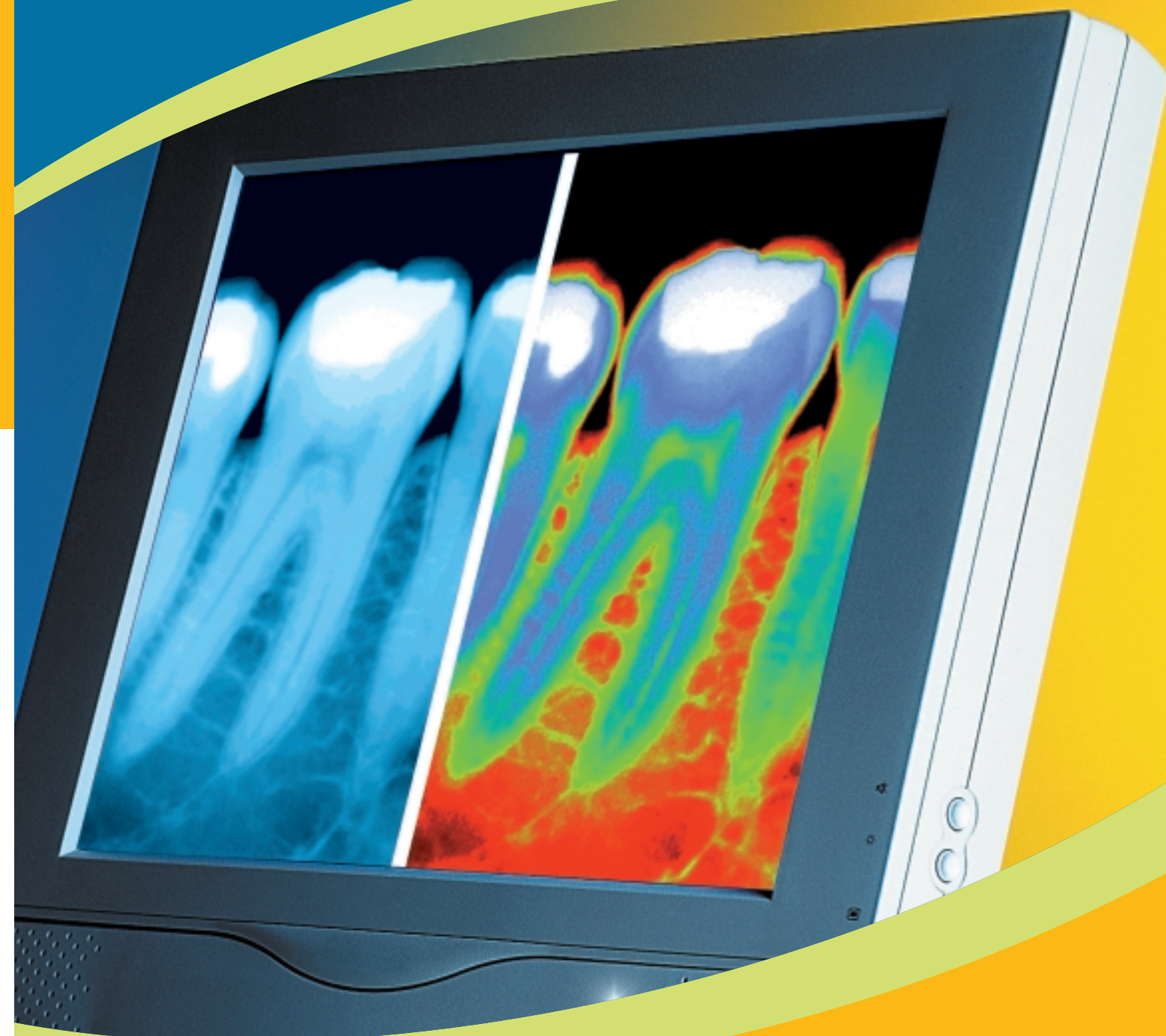
### External USB unit

Multi-chair	Simple to install and maintain
Dimensions	11 w x 16 L x 4 h cm



Rinn positioner with sensor support

Suleyman & Faratin - RCS Paris B 339 720 153 - Design edo - Document non contractuel - 1/01 - \* Conforms to current standards. - Printed in the EC.



## The best in instant diagnosis

**owandy**

by *Julie*

**owandy**

## With the largest integrated sensitive area your diagnosis will know no limits



Screen caption

**Size advantage:** You have at your disposal a 20% larger sensitive area than with any other sensor of the same size. The CCD sensor's 730 mm<sup>2</sup> allows instant production of magni-

ficent **Bitewing images or spectacular periapical images.** This multi-function saves you the need to buy a second sensor. Use vertically for endodontology or horizontally for prevention,

the DSX 730 USB faithfully reproduces the dento-alveolar structures and gives outstanding images in all dental x-ray applications, without sacrificing patient comfort.



Bitewing shot

Detection of interproximal caries

Scale 1

730 mm<sup>2</sup> active surface, 20% extra image



Periapical view

Root canal treatment



## Ergonomics providing you with the finest quality images

4.5 mm thick and **anatomically designed**, the comfort of your patients is put first. Specific positioners, plus a set of adaptors for Rinn positioners, are also available to ensure perfect image quality.

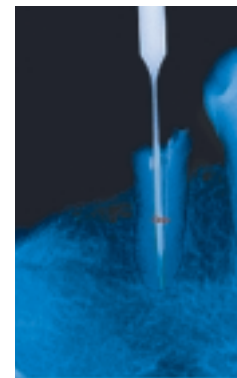
## Exceptional image quality recognised worldwide

**Rated among the best digital sensors** by the CRA\* test lab, the DSX 730 USB has also become an international benchmark with its high resolution (CCD 23.8  $\mu$ m/mm) and incomparable image definition (1 652 400 pixels with 4 096 levels of grey).

Its advantages speak for themselves, and are an invitation to you, whatever your working habits or the type of work you do, to benefit from digital images of a **diagnostic value as yet unequalled.**

**Further benefits:** From the start you have at your fingertips the new tubular structure scintillator technology which increases the sensitivity of the sensor while at the same time considerably reducing its electronic noise (47 @ 20 mRem). The extreme cleanliness of the images obtained and their sharpness actively enhance the quality of your x-ray diagnosis.

\* Clinical Research Associates, U.S.A.



Root canal measurement

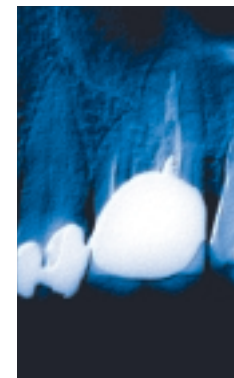


Image processed with the "low relief" filter



Implantology horizontal shot allowing the display of three implants

## No more compromising with safety

Insist on the very best standards of hygiene. Although protections (single-use sheaths) are necessary for each patient, the DSX 730 USB sensor gives you the benefit of **impermeability standard IPX7** which allows cold decontamination by simple immersion in a decontamination product.

But the discovery which will astound you is the extreme sensitivity of the sensor, allowing a **reduction of 90%** in x-ray radiation when taking the shot. This major advance over conventional x-ray technology makes your x-ray practice safer for yourself and all of your care team, at the same time as offering you a **superb added value tool.**

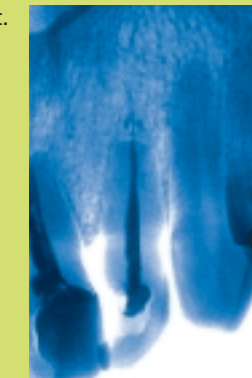
Finally, let us not forget that digital imaging reconciles radiology and ecology, by completely eliminating all chemical discharge to the environment.

## Benefit from the many digital processes

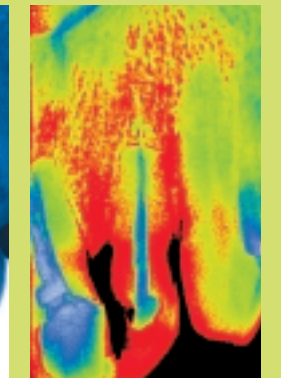
As soon as your sensor is in position in the patient's mouth you will have a large format real time image of **exceptional definition.** No more stress, no more waiting for development, and no more repeated missed appointments by your patient.

These easy-to-use digital processes add to your x-ray diagnosis facilities as well as improving the patient's image of you. Pseudo-colours and 3D, customizable status presentation and integration of shots in the dental plan aid communication and facilitate acceptance of treatment.

It's easy to try out **new techniques of diagnosis**, using QuickVision imaging software with its intuitive icons: **video inversion, contrast enhancement, zoom, framing**, filters and root canal measurement.



Video inversion



Pseudo colours



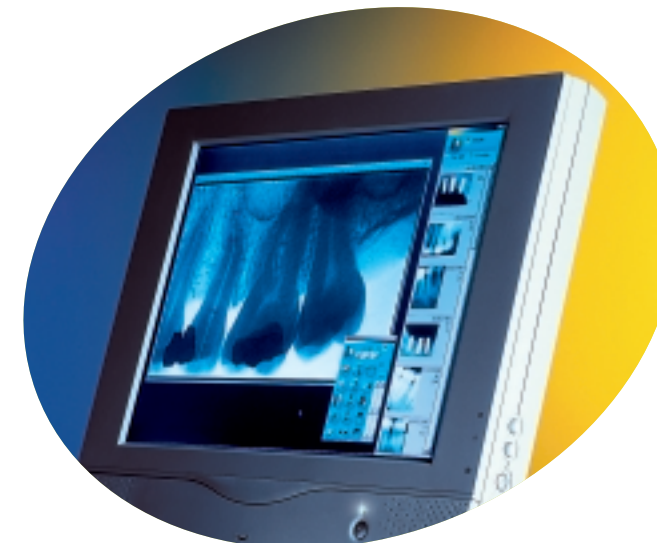
## Plug & Play: instant entry to the world of efficiency

Thanks to Plug & Play technology, installing the DSX 730 USB sensor **could not be easier.** All you need to do is connect the USB unit to your PC to transform the PC into a powerful diagnostic imaging station.

You can then benefit immediately from all the advantages of digital radiology and upgrade your imaging centre towards total practice management.

At this point you have complete freedom to **divide your resources** between several chairs using endodontology, implantology and parodontology, simply by connecting your unit to the digital station of your choice.

You will achieve substantial **economies of scale** and benefit from extremely simplified maintenance.



## Move naturally toward total interactive practice management

Of course the images you obtain can be saved by simple confirmation, archived, referenced, printed and consulted at any time, including during operations. By its very nature the QuickVision imaging software module is **upgradeable toward total interactive practice management** (accounting, traceability, diary) and communication with an in-mouth camera and opens up a new world of interactivity.

